

**glp architects**  
 1001 New Hampshire  
 Lawrence, Kansas 66044-3045  
 785.843.6554 Fax: 785.841.9  
 m@glp.com

**Bartlett & J**  
 Bartlett & J  
 1220 E. 29th St., Suite 100  
 Lawrence, KS 66044

**L S & A**  
 LATIMER BOM  
 & ASSOCIATE  
 P.A. ENGINEERS  
 700 New Hampshire Bldg 1110  
 Lawrence, Kansas 66044  
 Phone: (785) 233-2232 Fax: (785) 233-  
 2232 Email: ls@lsandab.com

**PERBOLTE**  
**CREATIVE**  
 We will do it. All day. All night.  
 All seasons. All weather.  
 All possibilities. All solutions.

**R. C. Coffeen**  
 ENGINEER  
 1001 New Hampshire  
 Lawrence, Kansas 66044

**Engineering**  
 Mechanical, Electrical, Plumbing, Fire Protection, and Energy Conservation

# LAWRENCE ARTS CENTER

LAWRENCE ~ KANSAS

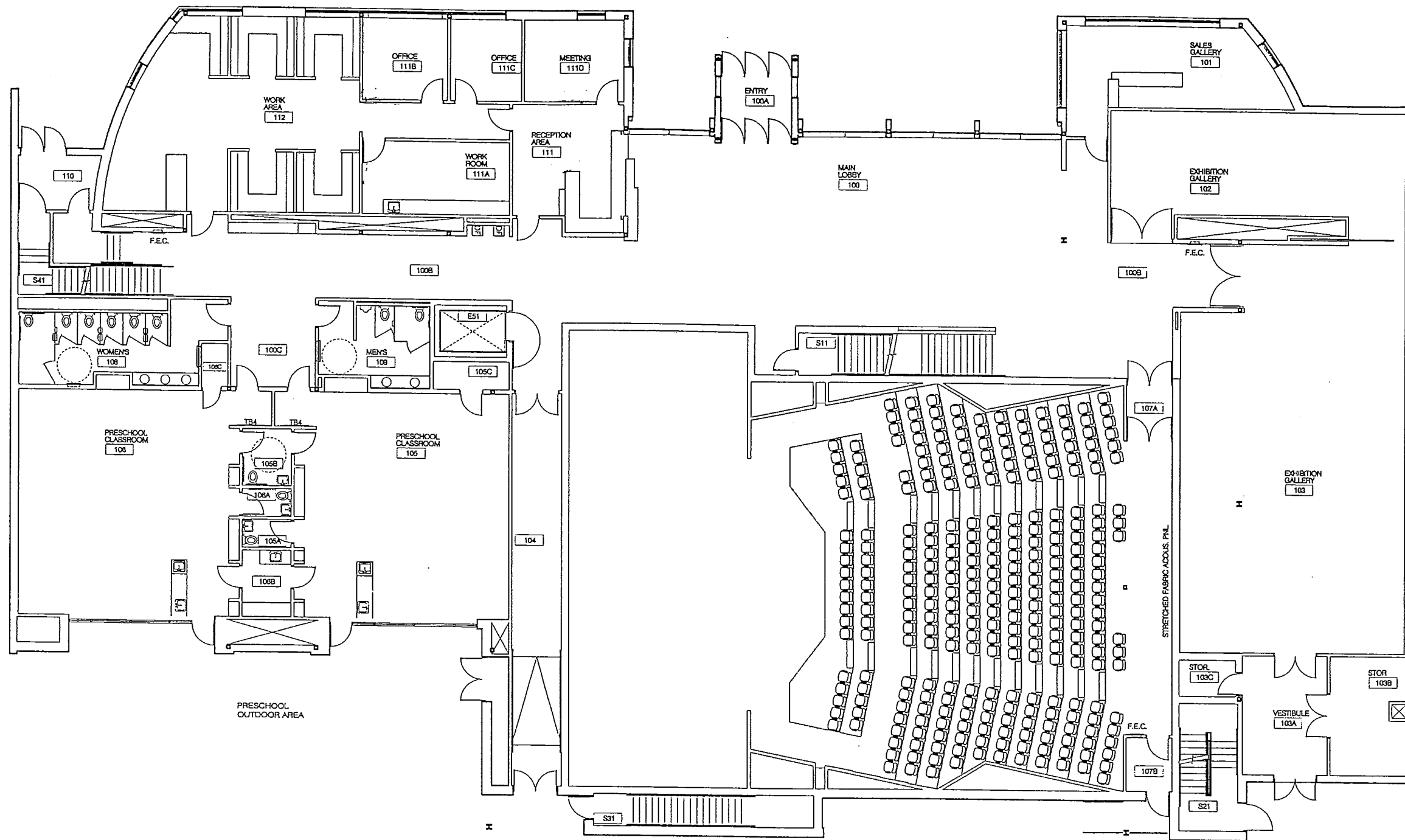
GLPA Project No. M028.01  
 Drawn by: GLPA 20a  
 Checked by:  
 Submittal Date  
 PREVIEW 8-23-08

GLP ARCHITECTS, P.A. is the design professional responsible for the design of the project. LATIMER BOM & ASSOCIATE, P.A. ENGINEERS is the engineering professional responsible for the design of the project. PERBOLTE CREATIVE is the construction management professional responsible for the project. R. C. COFFEEN is the engineering professional responsible for the project. LAWRENCE ARTS CENTER is the client for the project.

Sheet No. A100

**1 BASEMENT FLOOR PLAN**  
 SCALE: 1/8" = 1' - 0"





**gipmarchite**  
 1031 New Hampshire  
 Lawrence, Kansas 66044-3045  
 785.843-6554 Fax: 785.841-6  
 me@gipm.com

**Bartlett & J**  
 1221 E. 24th Street, Topeka, KS 66604  
 Phone: 785.233.4444 Fax: 785.233.4444

**LS & A**  
**LATIMER SON & ASSOCIATE**  
 P.A. ENGINEERS  
 202 SW Parkway Blvd 11th  
 Topeka, Kansas 66602  
 Voice: (785) 233-4332 Fax: (785) 233-  
 Email: ls@a.com

**PEERBOLTE CREATIVE**  
 www.pbcreative.com  
 1000 SW 10th St, Topeka, KS 66602  
 Phone: 785.233.4444 Fax: 785.233.4444

**R. C. Coffey**  
 CONSULTANT IN ARCHITECTURE  
 1000 SW 10th St, Topeka, KS 66602  
 Phone: 785.233.4444 Fax: 785.233.4444

**engineering**  
 www.mechanical.com  
 1000 SW 10th St, Topeka, KS 66602  
 Phone: 785.233.4444 Fax: 785.233.4444

# LAWRENCE ARTS CENTER

LAWRENCE ~ KANSAS

GLPA Project No. 080208.01  
 Drawn by: GLPA 514  
 Checked by:

REVIEW	Date
	8-23-08

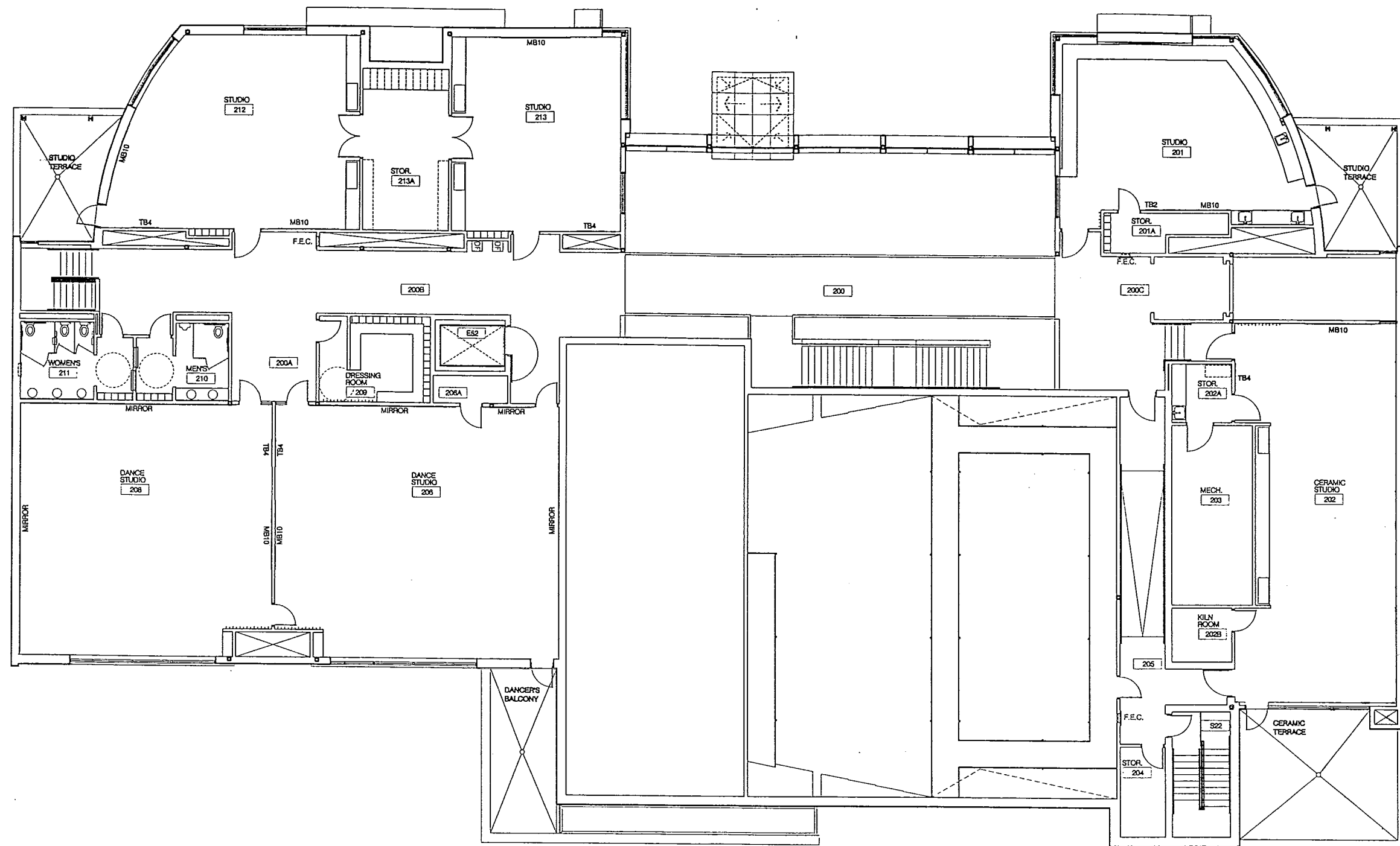
THIS DRAWING IS THE PROPERTY OF GIPM ARCHITECTURE, P.A. AND IS NOT TO BE REPRODUCED OR TRANSMITTED IN ANY FORM OR BY ANY MEANS, ELECTRONIC OR MECHANICAL, INCLUDING PHOTOCOPYING, RECORDING, OR BY ANY INFORMATION STORAGE AND RETRIEVAL SYSTEM. WITHOUT THE WRITTEN PERMISSION OF GIPM ARCHITECTURE, P.A.

Sheet No.

**1 GROUND FLOOR PLAN**  
 SCALE: 1/8" = 1' - 0"



A110



**glpmarchite**  
 1001 New Hampshire  
 Lawrence, Kansas 66044-2042  
 785.843-6664 Fax 785.841-4  
 mel@glpm.com

**BR** Bartlett & B  
 1322 S.W. 22nd Ave., Topeka, KS 66604  
 Phone (785) 233-4222 Fax (785) 233-4222

**LS & A** LATIMER SON & ASSOCIATE  
 P.A. ARCHITECTS  
 732 SW Lawrence Blvd 1110  
 Topeka, Kansas 66608  
 Voice (785) 233-4222 Fax (785) 233-4222  
 Email: ls@latimer.com

**PEEROLTE CREATIVE**  
 417 Broadway  
 Topeka, KS 66608  
 Phone (785) 233-4222 Fax (785) 233-4222

**R. C. Coffey**  
 1001 New Hampshire  
 Lawrence, Kansas 66044-2042  
 Phone (785) 233-4222 Fax (785) 233-4222

**Lawrence Arts Center**  
 1001 New Hampshire  
 Lawrence, Kansas 66044-2042  
 Phone (785) 233-4222 Fax (785) 233-4222

# LAWRENCE ARTS CENTER

LAWRENCE ~ KANSAS

GLPA Project No. 88028.01  
 Drawn by: GLPA 804  
 Checked by:

Submittal Date  
 REVIEW 8-23-08

UNLESS OTHERWISE SPECIFIED BY NOTES, P.A. & ASSOCIATE IS NOT RESPONSIBLE FOR THE ACCURACY OF THE INFORMATION CONTAINED HEREIN. THE USER OF THIS DOCUMENT ASSUMES ALL LIABILITY FOR THE USE OF THIS DOCUMENT. THE USER OF THIS DOCUMENT ASSUMES ALL LIABILITY FOR THE USE OF THIS DOCUMENT.

Sheet No. A120

**1 SECOND FLOOR PLAN**  
 SCALE: 1/8" = 1' - 0"

